

aluminium, acc. to A-A 59326 25.09.98 (formerly MIL - C 27487)

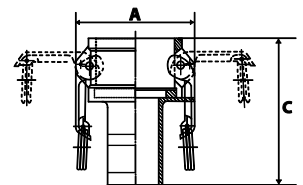
Coupling system for quick and easy connection of two hoses or for joining one hose to a machine connection.

A male part and a female part are joined together by shifting the handles.  
There is no need to turn the hose!

Kamlok couplings are used for a wide range of applications in industrial plant and mechanical engineering, tank and container construction, the chemical industry, food processing, mining, refuelling systems, defence technology, etc.

All Kamlok quick coupling boxes and Kamlok closure boxes are supplied with NBR seal.

Pressure range                      max. 16 bar  
Temperature range                -20 to 68 °C  
Sealant                                NBR, resistant to oils and benzine



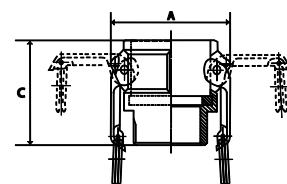
1112.20

### Kamlok female couplers with hose stem, Part C

Art. No.	Ident No.	For hose I.D.	For plug Ø mm	A mm	C mm
108026	1112.34	19	32	61.3	90.5
108027	1112.10	25	37	68.2	95.0
108028	1112.114	32	45	79.7	102.5
108029	1112.112	38	53	87.4	116.5
108030	1112.20	50	63	97.0	134.5
108031	1112.212	63	76	109.5	142.4
108032	1112.30	75	92	131.8	159.0
108033	1112.40	100	120	159.9	162.5

### Kamlok female couplers, male threaded, Part B

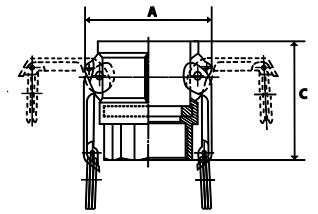
Art. No.	Ident No.	Thread	For plug Ø mm	A mm	C mm
108034	1113.34	R 3/4	32	61.3	52.2
108035	1113.10	R 1	37	68.2	59.0
108036	1113.114	R 1 1/4	45	79.7	65.5
108037	1113.112	R 1 1/2	53	87.4	69.5
108038	1113.20	R 2	63	97.0	77.0
108039	1113.212	R 2 1/2	76	109.5	84.5
108040	1113.30	R 3	92	131.8	89.5
108041	1113.40	R 4	120	159.9	92.0



1113.112

## Kamlok female couplers, female threaded, Part D

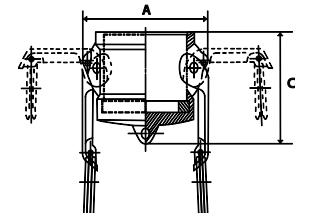
Art. No.	Ident No.	Thread	For plug Ø mm	A mm	C mm
108042	1114.34	G 3/4	32	61.3	52.2
108043	1114.10	G 1	37	68.2	59.0
108044	1114.114	G 1 1/4	45	79.7	67.5
108045	1114.112	G 1 1/2	53	87.4	69.5
108046	1114.20	G 2	63	97.0	76.0
108047	1114.212	G 2 1/2	76	109.5	84.5
108048	1114.30	G 3	92	131.8	89.5
108049	1114.40	G 4	120	159.9	92.0



1114.112

## Kamlok dust caps for male adapters, Part DC

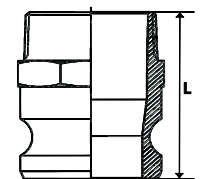
Art. No.	Ident No.	Size	For plug Ø mm	A mm	C mm
108050	1115.34	3/4	32	61.3	45.2
108051	1115.10	1	37	68.2	57.4
108052	1115.114	1 1/4	45	79.7	65.0
108053	1115.112	1 1/2	53	87.4	62.0
108054	1115.20	2	63	97.0	69.0
108055	1115.212	2 1/2	76	109.5	77.5
108056	1115.30	3	92	131.8	76.5
108057	1115.40	4	120	159.9	78.0



1115.20

## Kamlok male adapters, male threaded, Part F

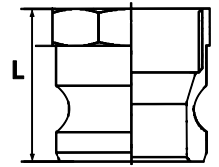
Art. No.	Ident No.	Thread	Plug Ø mm	L mm
108058	1116.34	R 3/4	32	55.0
108059	1116.10	R 1	37	67.8
108060	1116.114	R 1 1/4	45	78.0
108061	1116.112	R 1 1/2	53	76.0
108062	1116.20	R 2	63	83.5
108063	1116.212	R 2 1/2	76	97.0
108064	1116.30	R 3	92	99.5
108065	1116.40	R 4	120	104.5



1116.10

**Kamlok male adapters, female threaded, Part A**

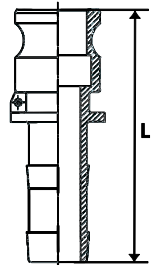
Art. No.	Ident No.	Thread	Plug Ø mm	L mm
108066	1117.34	G 3/4	32	41.0
108067	1117.10	G 1	37	50.8
108068	1117.114	G 1 1/4	45	55.0
108069	1117.112	G 1 1/2	53	56.0
108070	1117.20	G 2	63	59.0
108071	1117.212	G 2 1/2	76	79.2
108072	1117.30	G 3	92	71.7
108073	1117.40	G 4	120	71.2



1117.112

**Kamlok male adapters with hose stem, Part E**

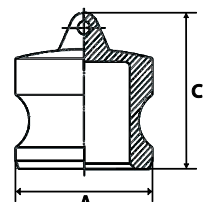
Art. No.	Ident No.	For hose I.D.	Plug Ø mm	L mm
108074	1118.34	19	32	85.3
108075	1118.10	25	37	100.8
108076	1118.114	32	45	109.0
108077	1118.112	38	53	123.5
108078	1118.20	50	63	142.0
108079	1118.212	63	76	150.5
108080	1118.30	75	92	157.0
108081	1118.40	100	120	166.0



1118.112

**Kamlok male dust plugs, Part DP**

Art. No.	Ident No.	Size	Plug Ø mm	A mm	C mm
108082	1119.34	3/4	32	32.1	38.0
108083	1119.10	1	37	36.6	52.3
108084	1119.114	1 1/4	45	45.4	57.5
108085	1119.112	1 1/2	53	53.4	57.0
108086	1119.20	2	63	63.0	63.5
108087	1119.212	2 1/2	76	57.7	67.5
108088	1119.30	3	92	91.4	67.5
108089	1119.40	4	120	119.5	69.8



1119.20

## Replacement seals for Kamlok couplings, NBR

Art. No.	Ident No.	For coupling DN
108090	108.101	20 (3/4")
108091	108.102	25 (1")
108092	108.103	32 (1 1/4")
108093	108.104	40 (1 1/2")
108094	108.105	50 (2")
108095	108.106	65 (2 1/2")
108096	108.107	75 (3")
108097	108.108	100 (4")



108.102

## Replacement chains for Kamlok couplings, stainless steel

Art. No.	Ident No.
108098	108.300



108.300